

Paravel Systems

APPLICATION NOTE 010

Installing The Traffic Light-X from Hardy Data Systems on RHEL 6

SCOPE

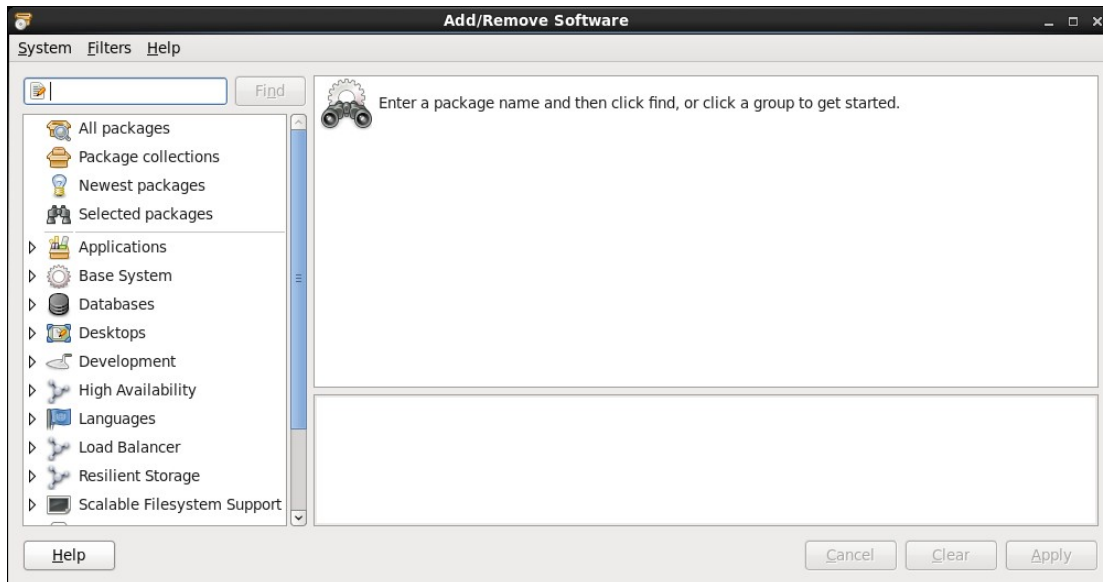
This application note details the procedures for installing and configuring The Traffic Light-X from Hardy Data Systems on RedHat Enterprise Linux [EL6] derived distributions running on Intel 32 bit [i386] and 64 bit [x86_64] architectures.

PREREQUISITES

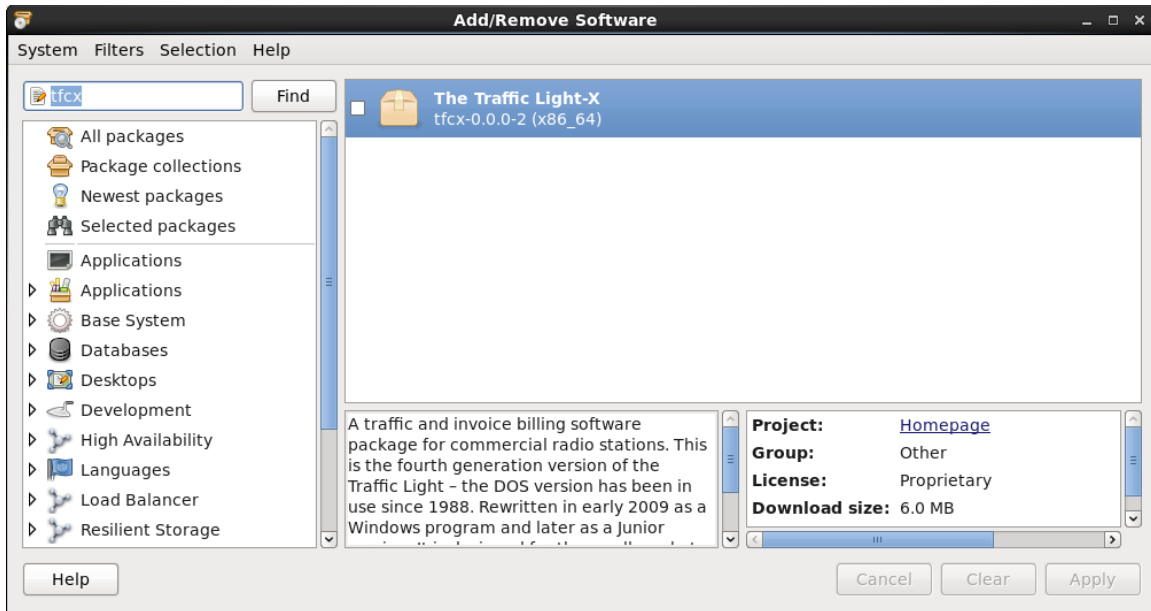
- 1) A system running one of the following Linux distributions:
 1. CentOS 6
 2. Paravel Systems Broadcast Appliance 2
 3. RedHat Enterprise Linux 6
 4. Scientific Linux 6
- 2) Internet access

PROCEDURE

- 1) Configure the Software Repository [users of Broadcast Appliance 2 can skip to step 2), as these files are already included.]
 1. Download <http://download.paravelsystems.com/CentOS/6com/RPM-GPG-KEY-Paravel-Broadcast> to the '/etc/pki/rpm-gpg/' directory.
 2. Download <http://download.paravelsystems.com/CentOS/6com/Paravel-Commercial.repo> to the '/etc/yum.repos.d/' directory.
- 2) In the **System** menu, click **Administration**, then **Add/Remove Software**.



- 3) In the search control at the upper left-hand corner, enter 'tfcx' and then click the **Find** button.



- 4) Check the item that appears for the search results and then click the **Apply** button.



- 5) Enter the root (administrator) password when prompted, following which the system will download and install the software (this may take several minutes).
- 6) Close the **Add/Remove Software** window.
- 7) To start the program, pull down the **Applications** menu and select **Office**, then **The Traffic Light-X**. Initially, the program will start in Demo Mode. To purchase a key to unlock the full features of the program, contact Hardy Data Systems at:

Hardy Data Systems
 PO Box 7304
 Tifton, GA 31793

(229) 387-7373 / jim@hds.net

REVISION HISTORY

- Sat 1` Jul 2015 – Fred Gleason <fredg@paravelsystems.com>
- Added contact information for Hardy Data Systems.
- Fri 10 Jul 2015 – Fred Gleason <fredg@paravelsystems.com>
- Initial document creation.